

# Christmas Tree Safety



As you deck the halls this holiday season, be fire smart. A small fire that spreads to a Christmas tree can grow large very quickly.



## PICKING THE TREE

- Choose a tree with fresh, green needles that do not fall off when touched.



## PLACING THE TREE

- Before placing the tree in the stand, cut 2" from the base of the trunk.
- Make sure the tree is at least three feet away from any heat source, like fireplaces, radiators, candles, heat vents or lights.
- Make sure the tree is not blocking an exit.
- Add water to the tree stand. Be sure to add water daily.



## LIGHTING THE TREE

- Use lights that are listed by a qualified testing laboratory. Some lights are only for indoor or outdoor use.
- Replace any string of lights with worn or broken cords or loose bulb connections. Read manufacturer's instructions for number of light strands to connect.
- Never use lit candles to decorate the tree.
- Always turn off Christmas tree lights before leaving home or going to bed.



## After Christmas

Get rid of the tree after Christmas or when it is dry. Dried-out trees are a fire danger and should not be left in the home or garage, or placed outside against the home.

Check with your local community to find a recycling program.

Bring outdoor electrical lights inside after the holidays to prevent hazards and make them last longer.

## FACTS

- ! **One quarter** of home Christmas tree fires are caused by electrical problems.
- ! Although Christmas tree fires are not common, when they do occur, they are more likely to be serious.
- ! A heat source too close to the tree causes roughly **one in every four** of the fires.



Your Source for SAFETY Information

NFPA Public Education Division • 1 Batterymarch Park, Quincy, MA 02169

# Winter Holiday Safety

Winter holidays are a time for families and friends to get together. But that also means a greater risk for fire. Following a few simple tips will ensure a happy and fire-safe holiday season.



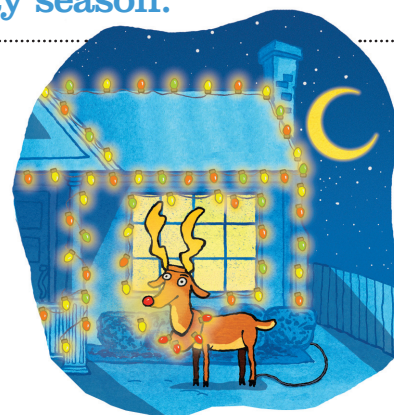
## HOLIDAY DECORATING

- Be careful with holiday decorations. Choose decorations that are flame resistant or flame retardant.
- Keep lit candles away from decorations and other things that can burn.
- Some lights are only for indoor or outdoor use, but not both.
- Replace any string of lights with worn or broken cords or loose bulb connections. Read manufacturer's instructions for number of light strands to connect.
- Use clips, not nails, to hang lights so the cords do not get damaged.
- Keep decorations away from windows and doors.



## HOLIDAY ENTERTAINING

- Test your smoke alarms and tell guests about your home fire escape plan.
- Keep children and pets away from lit candles.
- Keep matches and lighters up high in a locked cabinet.
- Stay in the kitchen when cooking on the stovetop.
- Ask smokers to smoke outside. Remind smokers to keep their smoking materials with them so young children do not touch them.
- Provide large, deep ashtrays for smokers. Wet cigarette butts with water before discarding.



## Before Heading Out or to Bed

**Blow out** lit candles when you leave the room or go to bed. **Turn off** all light strings and decorations before leaving home or going to bed.

## FACTS

- ❗ **Two of every five** home decoration fires are started by candles.
- ❗ **Nearly half** of decoration fires happen because decorations are placed too close to a heat source.



Your Source for **SAFETY** Information

NFPA Public Education Division • 1 Batterymarch Park, Quincy, MA 02169